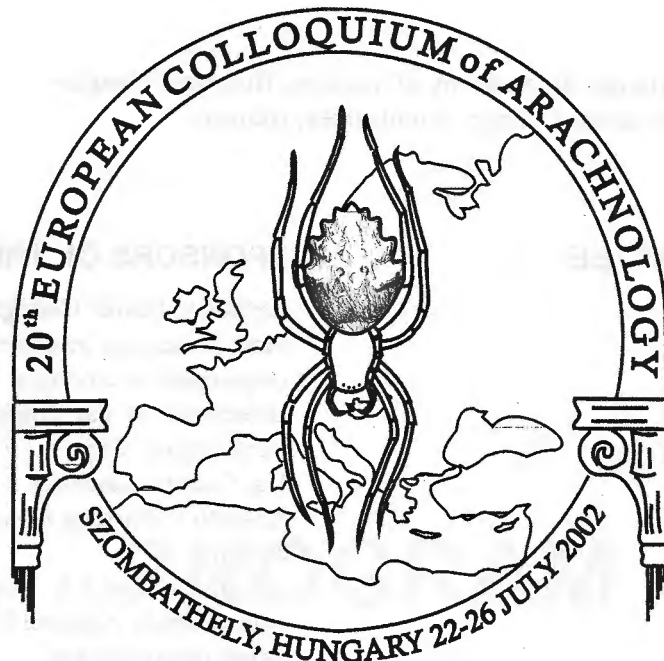


20TH EUROPEAN COLLOQUIUM OF ARACHNOLOGY



PROGRAM ABSTRACTS LIST OF PARTICIPANTS

Department of Zoology, Berzsényi Dániel College, Szombathely
&
Plant Protection Institute
Hungarian Academy of Sciences, Budapest

THE 20TH EUROPEAN COLLOQUIUM OF ARACHNOLOGY

Official meeting of the European Arachnological Society

Szombathely, Hungary 22-26 July, 2002

ORGANISERS:

Plant Protection Institute, Hungarian Academy of Sciences, Budapest, Hungary
Department of Zoology, Berzsényi College, Szombathely, Hungary

ORGANISING COMMITTEE:

Ferenc Samu (chair),
Csaba Szinetár (co-chair),
György Dudás,
János Eichardt,
Roland Horváth,
Balázs Kiss,
Teréz Márkus Szinetárné,
András Szirányi,
Éva Szita,
Tamás Szűts,
Ferenc Tóth

SPONSORS OF THE COLLOQUIUM:

Berzsényi Dániel College
Plant Protection Institute HAS
Department of Zoology, Berzsényi Dániel College
Directorate of Vas County Museums
Szombathely City
Vas County Assembly
Kossuth Publishing House
ÉlőVilág
Balogh és Társa Kft, Szombathely
Fertő-Hanság National Park
Őrség National Park
Balaton-felvidék National Park
FERROSÜT, Szombathely
Hungarian Ornithological and Nature
Conservation Society
Prospektus Printing House, Veszprém
BUDA PIÉRT Kereskedelmi Kft.
Vasi Volán Rt.
County Educational Centre
OLYMPUS Hungary Kft
Hungarian Natural History Museum, Zool. Section
Kinga Fotó, Szombathely
Kertész MTSZ, Szombathely

**In Memoriam
Imre Loksa**

Diversity of the ultrastructural characters and variation of the copulatory organs in *Aelurillus v-insignitus* (Clerck, 1758) (Araneae, Salticidae)**Azarkina G. N. (1), Marusik Yu. M. (2), Koponen S. (3)***(1) Institute for Systematic and Ecology of Animals RAS, Frunze Str. 11, Novosibirsk 630091, Russia**(2) Institute for biological problems of the North RAS, Portovaya Str. 18, Magadan 685000, Russia**(3) Zoological Museum, University of Turku, FIN-20014 Turku, Finland*

The jumping spider, *Aelurillus v-insignitus*, the type species of *Aelurillus* and the subfamily Aelurillinae, has a trans-Eurasian range. Some somatic characters of males taken from the Finnish population (*viz.* body skin, scales of carapace, abdomen, leg I and palps) have been studied with SEM. Particular emphasis has been placed on the shape of scales of different colour, which are shown to be of different structure. Furthermore, it was found that scales of the same colour might also be of different structure. Some types of scales are attached to cuticle less firmly than other. The embolus *A. v-insignitus* is complicated and consists of two parts (the embolus *sensu stricto* and the terminal apophysis) fused by the embolic membrane. The embolar structure of specimens from different populations (Scandinavia, Crimea, West Siberia) demonstrates a clear variation of unclear status. Judging from these variations, one might assume that somatically identical populations may belong to three different species.

NOTES